

受信用 BPF の通過特性 (S21) の実測データ

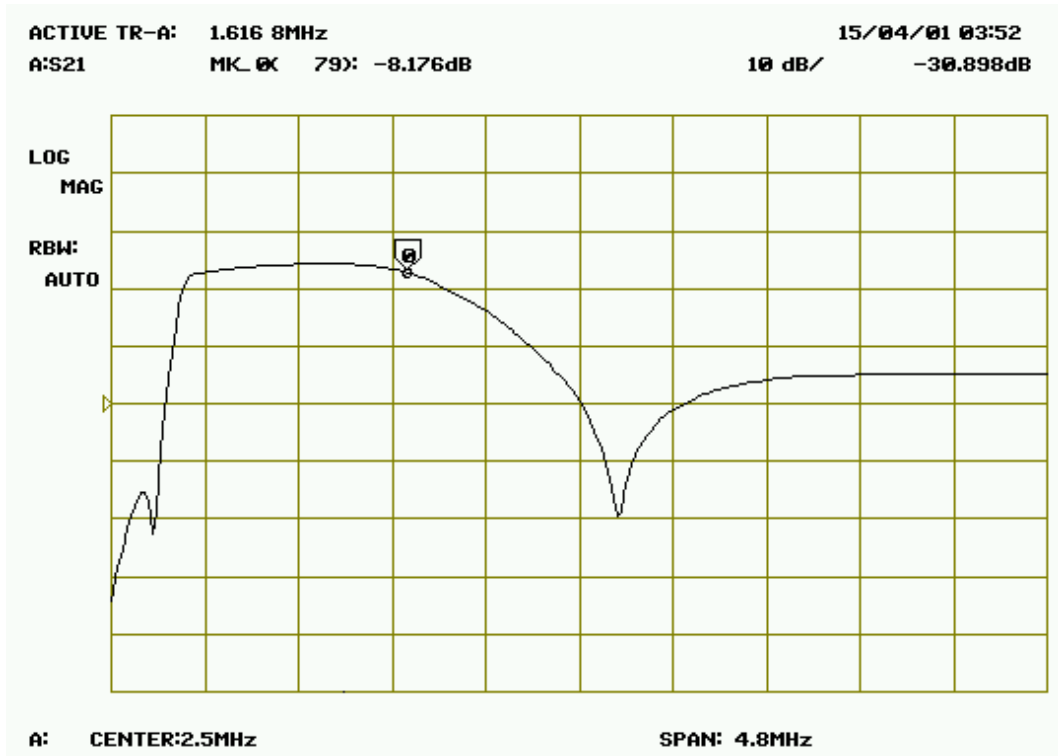


図 1 BPF 1MHz



図 2 BPF 2MHz

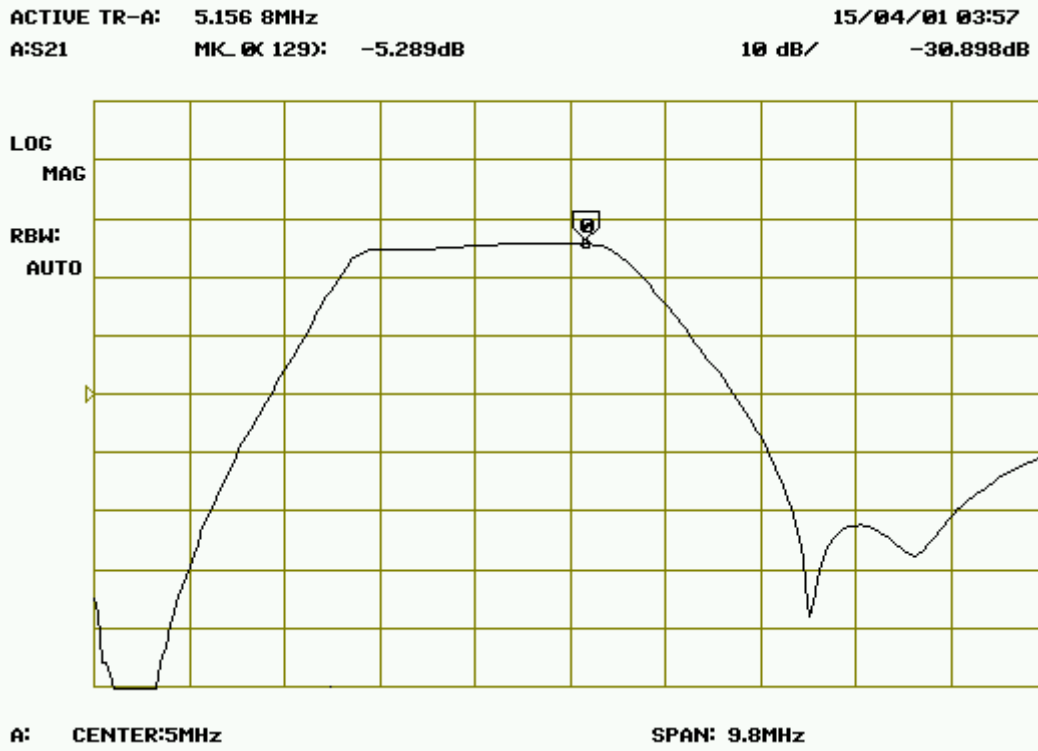
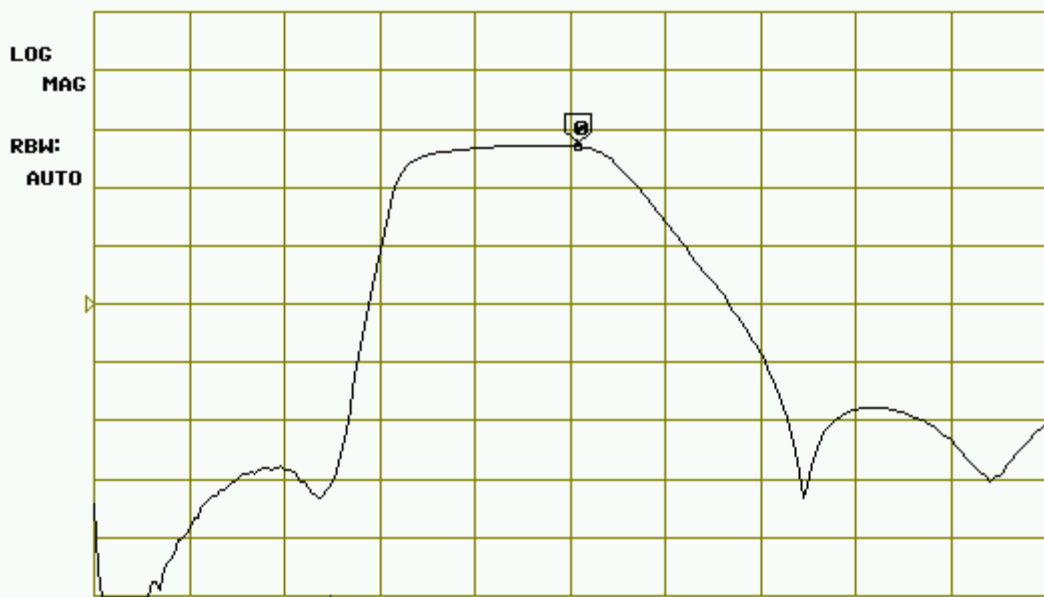


图 3 BPF 3.5MHz



图 4 BPF 7MHz

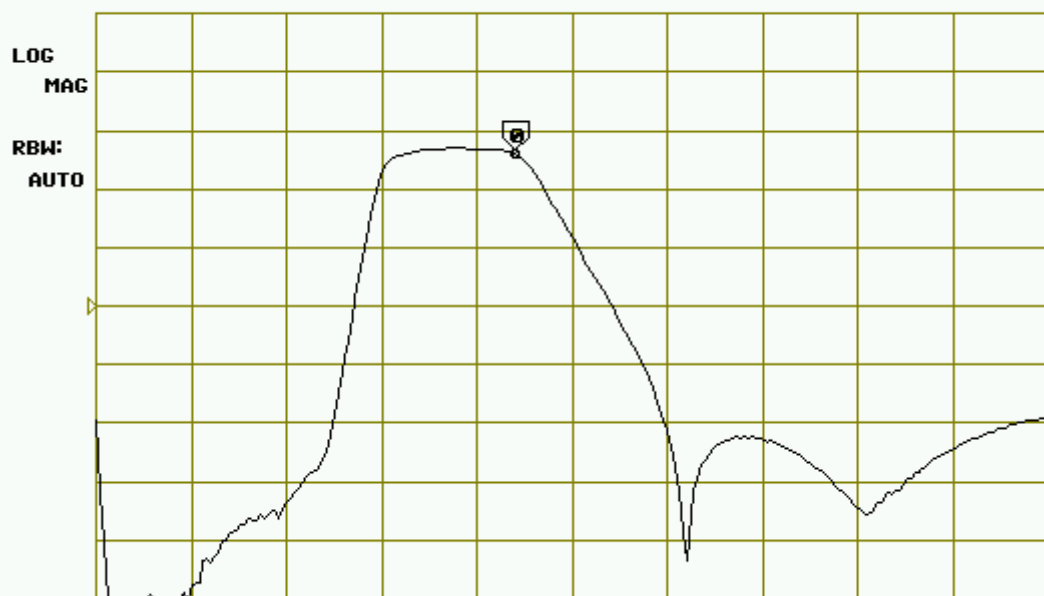
ACTIVE TR-A: 15.238 4MHz
A:S21 MK_0K 127: -4.063dB
15/04/01 04:03
10 dB/ -30.898dB



A: CENTER:15MHz SPAN: 29.8MHz

图 5 BPF 14MHz

ACTIVE TR-A: 22.012MHz
A:S21 MK_0K 110: -5.047dB
15/04/01 04:07
10 dB/ -30.898dB



A: CENTER:25MHz SPAN: 49.8MHz

图 6 BPF 21MHz

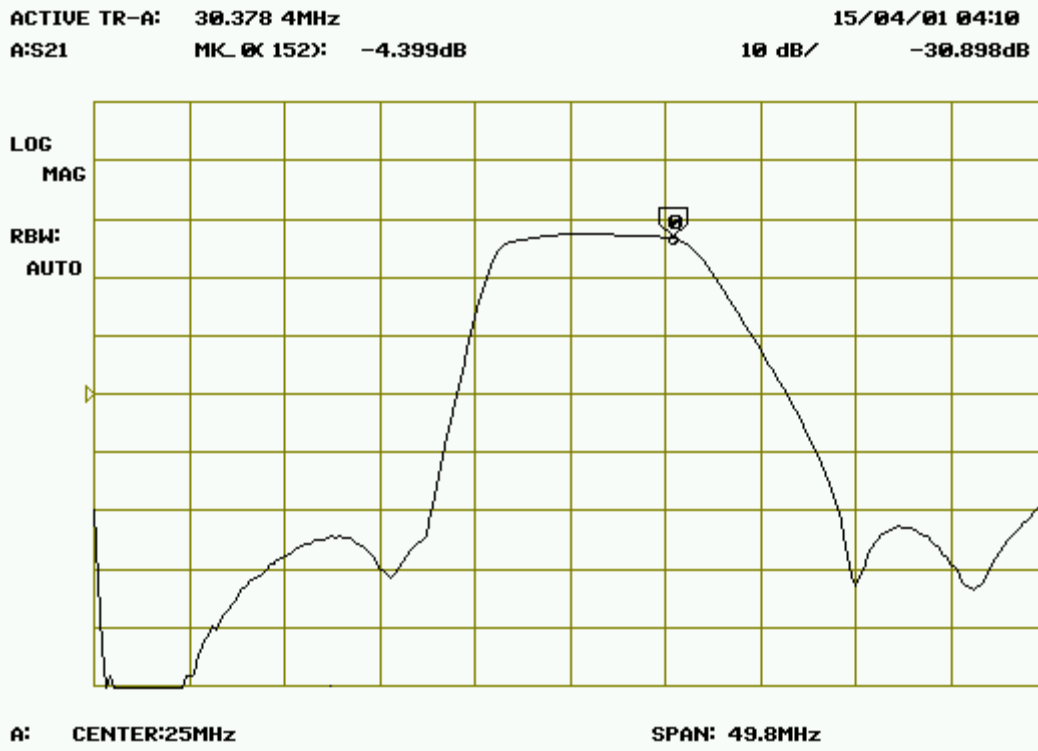


图 7 BPF 28MHz